



Thank you for purchasing **KOSO LCD meter**. Before installing, please check the instruction carefully.

Notice

1. The lcd meter is apply for **DC 12V**.
2. For installation, please follow the steps described in manual. Any damage caused by wrong installation shall be imputed to the users.
3. To avoid the short circuit, please don't pull the wire when installing. Don't break or modify the wire terminal.
4. Do not disassemble or change any parts excluding the manual description.
5. The interior examination or maintenance should be executed by our professionals.

MARK MEANING:

NOTE You could get the installation details from the information behind the mark.

▲ Some processes must be followed to avoid the affection caused by wrong installation.

▲ WARNING! Some processes must be followed to avoid damages to yourself or the public.

▲ CAUTION! Some processes must be followed to avoid the damage to the vehicle.



PRESS THE
BUTTON ONE TIME



PRESS THE
BUTTON 3
SECONDS

1-1 Accessory

1 Lcd meter X 1

2 Power wire X 1

3 Indicator wire X 1

4 Digital speed signal sensor X 1

5 D6 X 5L m/m magnet X 6

6 Connect terminal X 9

7 M8/ S type speed sensor bracket X 1

8 M10/ S type speed sensor bracket X 1

9 Hexagon socket screw X 2

10 2.5 m/m spanner X 1

11 4 m/m spanner X 1

12 Meter bracket X 1 set

13 M5 X 12L screw X 2

14 M5 X 18L screw X 2

15 M5 gasket X 2

NOTE Please contact the local distributor if the items you open are not the same, with the above-listed one.

1-2 Option accessory

1 Disc magnet screw

- 5/16-18 X 22.1L
- M5 X P0.8 X 12L
- M6 X P1.0 X 12.6L
- M6 X P1.0 X 19.7L
- M6 X P1.0 X 24L
- M8 X P1.25 X 22.5L
- M8 X P1.25 X 27.5L
- M8 X P1.25 X 29L
- M10 X P1.25 X 28.3L

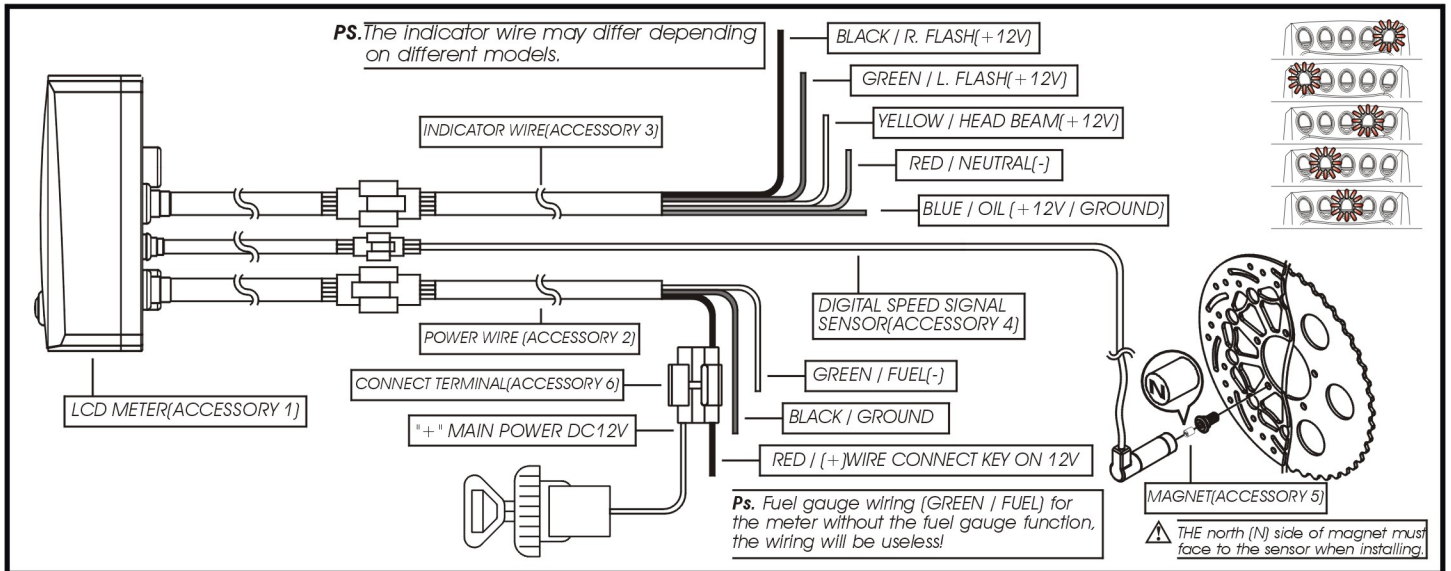
2 L type speed sensor bracket

3 Meter bracket (for stem)

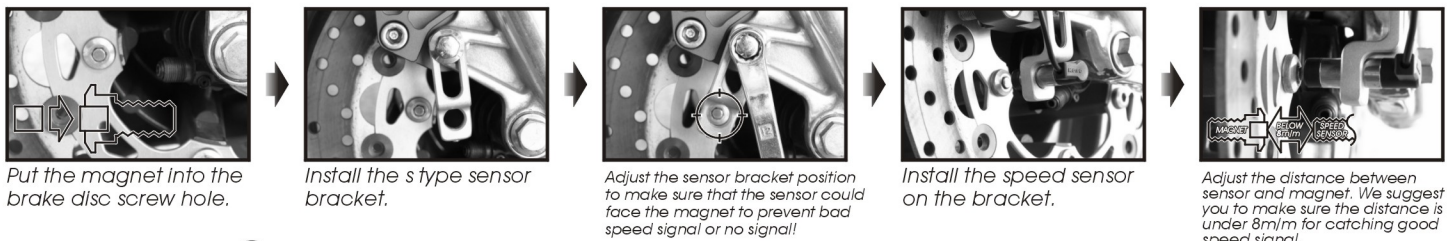
4 Meter bracket

NOTE Some of the option accessories may not sell. For the details, please contact the local distributor.

2-1 Wiring installation instructions



2-2 Installation instructions



P.S. You could make the speed more precise by adding the magnets. when installing the magnet, please put the magnet with **N**-mark side face the outside and put them averagely to avoid wrong signal.

EX. 1: If your disk has 3 screws, you could install 1 or 3 magnets to catch the speed.
 EX. 2: If your disk has 4 screws, you could install 1 - 2 or 4 magnets to catch the speed.
 EX. 3: If your disk has 5 screws, you could install 1 or 5 magnets to catch the speed.
 EX. 4: If your disk has 6 screws, you could install 1 - 2 - 3 or 6 magnets to catch the speed.

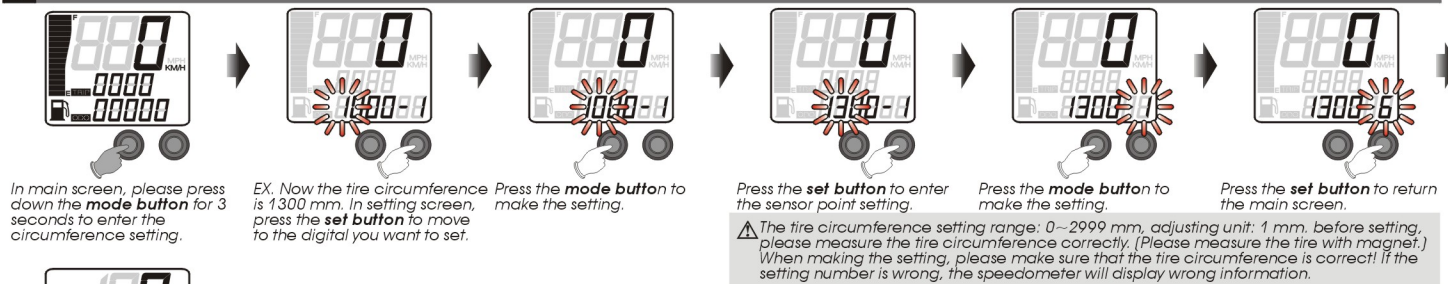
After finishing the magnet installation and sensor point setting, please move your tire to test the speedometer work or not.

3 Basic function instruction

Km/h MPH switch ● Hold down the set button, and then press the mode button one time.	Fuel symbol ● Display range: 15 levels. ● The fuel reserve symbol begins to flash if only 2 grids left.	○ Tire circumference Setting range: 0~2999 mm Adjust unit: 1 mm Sensor point: 1~6
Speedometer ● Display range: 0~199 km/h (0~123 MPH) ● Display unit: km/h or MPH.	Trip meter ● Display range: 0~999.9 km (mile), reset after 999.9 km (mile). ● Display unit: 0.1 km (mile).	○ Fuel resistance setting 100 Ω ● Effective voltage DC 12V ● Effective temperature range -10~+60°C
Odo meter ● Display range: 0~99999 km (mile), reset after 99999 km (mile). ● Display unit: 1 km (mile).	Trip Reset ● Press set button	● Meter standard JIS D 0203 S2 ● Meter size 82.2 X 83.1 X 28.8 mm ● Meter weight Around 152 g

NOTE Design and specification are subject to change without notice!

4 Tire circumference and sensor point setting



P.S. You could define the valve as the starting point and the terminal point to measure the wheel circumference with a measuring tape.

